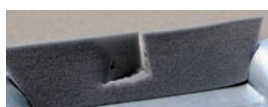
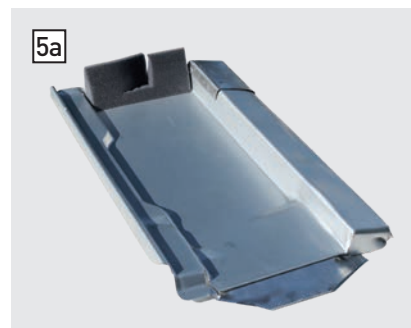
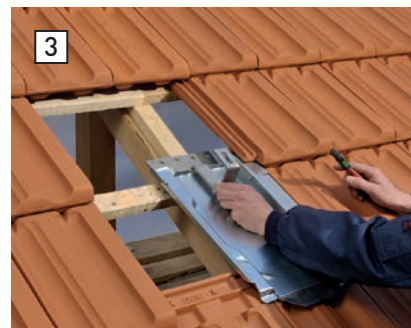


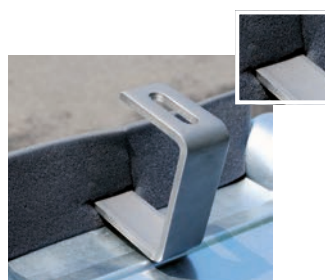


Original Marzari underlay plates – Type clay

1. Insert the metal roof tile – remove foil from colour-coated material, if applicable.
2. Secure it with a nail or screw.
3. Determine the position for the roof hook.
4. If necessary, bend the raised edge downwards (water uplift edge must remain functional).
5. Stick on the foam wedge.
- 5a. Cut the foam wedge into an “L” shape.
6. Install the roof hook.
7. Lay the roof tile.
8. Mould the lead skirting at the bottom. If present, mould the lead corner at the top right. Finished!



1. Cut the foam wedge into an “L” shape.
2. The foam pad must wrap around the roof hook.



When installing your metal roof tile, always ensure that the foam wedge is installed correctly. Improper preparation and installation of the foam wedge can lead to problems afterwards.

Please be sure to follow our instructions on the reverse side!



Important installation notes

- + We recommend a minimum roof pitch of 18°!
- + Check that the metal roof tile is a correct fit for the specific construction project.
Our metal roof tiles have been tested using a tile overlap within the middle of the permissible range. Due to the enormous variety and variable installation possibilities of these tiles, careful suitability testing and installation are essential, especially on clay tile roofs.
- + Special precautions should be taken to prevent snow drifts on “cold roofs” (for details, please refer to the tile manufacturer’s requirements).
- + During the roof survey, pay attention to the batten thickness and select roof hooks with a corresponding leg height and tile coverage length.
- + **Our tip:** Opt for high-quality materials (e.g. our polyester-coated versions) and avoid the natural corrosion process that affects metals.
- + **Compatibility of different materials:**
When planning the solar system, pay careful attention to the prescribed conditions as well as the application guidelines set out in the IFBS technical rules.
Example: copper sheet on the roof will cause serious damage to the metal roof tiles in a very short time if the material is galvanised.
- + **Our installation videos are a helpful aid.**
www.marzari-technik.de → Service → Installation videos and on YouTube

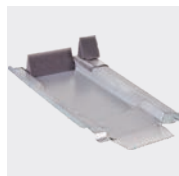
Example: fitting the foam wedge on different types



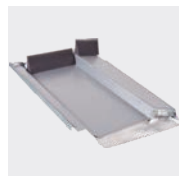
Type Grande 336



Type Extra 325



Type RK 255



Type Grande 360



Type Grande 280

Accessories For solar thermal energy and photovoltaic systems

Flat tile vent with flexible hose Ø 125/75

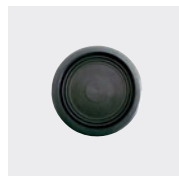


Type Universal



Type Beton

Pipe ducts for pipes and cables



EPDM grommet



RDF type clay with grommet



RDF type concrete with grommet

- + Simply cut out the desired diameter
- + Diameter from 20 – 65 mm

→ Our installation instructions are available in other languages ()